



# Wizard™

## User Guide



**Britax**

## Table of Contents

<b>Introduction</b> . . . . .	<b>2</b>
<b>Safety Information</b> . . . . .	<b>3-5</b>
<b>Child Restraint Features</b> . . . . .	<b>6-7</b>
<b>Vehicle Safety Belts</b> . . . . .	<b>8</b>
<b>Vehicle Seating Positions</b> . . . . .	<b>9</b>
<b>Rear Facing Installation</b> . . . . .	<b>10-15</b>
Rear Facing LATCH Installation . . . . .	10-11
Rear Facing Lap-Shoulder Belt Installation . . . . .	12-13
Rear Facing Lap Belt Installation . . . . .	14-15
<b>Forward Facing Installation</b> . . . . .	<b>16-20</b>
Forward Facing LATCH Installation . . . . .	16-17
Forward Facing Lap-Shoulder Belt Installation . . . . .	18-19
Forward Facing Lap Belt Installation . . . . .	20
<b>Switching the LATCH Connectors</b> . . . . .	<b>21</b>
<b>Installation In Aircraft</b> . . . . .	<b>22</b>
<b>Versa-Tether®</b> . . . . .	<b>23-25</b>
<b>Checking Buckle Position</b> . . . . .	<b>26</b>
<b>Recline Adjustment</b> . . . . .	<b>26</b>
<b>Using the Buckle</b> . . . . .	<b>27</b>
<b>Using the Chest Clip</b> . . . . .	<b>27</b>
<b>Securing Your Child</b> . . . . .	<b>28-29</b>
<b>Harness Height</b> . . . . .	<b>30-31</b>
Checking Harness Height . . . . .	30
Harness Height Adjustment . . . . .	31
<b>Care and Maintenance</b> . . . . .	<b>32-35</b>
<b>Warranty</b> . . . . .	<b>36</b>

This product and its components are subject to change without notice.  
© 2003 Britax Child Safety, Inc. All rights reserved.  
Printed in U.S.A.  
P228500 R2:11/03



## WARNING

DEATH or SERIOUS INJURY can occur:

- Use only in a rear-facing position when using restraint with an infant weighing less than 22 pounds (10 kg).
- Use only with children who weigh between 5 and 65 pounds (2.3 and 29 kg) and whose height is 49 inches (124 cm) or less. Rear facing 5–33 pounds (2.3–15 kg) and forward facing maximum 65 pounds (29 kg).
- Snugly adjust the belts provided with this child restraint around your child. A snug strap should not allow any slack. It lies in a relatively straight line without sagging. It does not press on the child's flesh or push the child's body into an unnatural position.
- Secure the top anchorage strap provided with this child restraint.
- Secure this child restraint with the vehicle's child restraint anchorage system if available or with a vehicle belt.
- Follow all instructions on this child restraint and in the written instructions located on lanyard, under cover in front of seat.
- Register your child restraint with the manufacturer.
- Use vehicle belt (not LATCH connectors) for installations with children weighing more than 48 pounds (21 kg). Refer to the vehicle owner's manual or contact the vehicle manufacturer for the maximum weight rating for their LATCH anchors. Unless specified otherwise by the vehicle manufacturer, assume a 48-pound child is the vehicle LATCH anchor limit.
- This child restraint must not be used in the home, in boats, or other non-certified applications.
- Based on crash statistics, the National Highway Traffic Safety Administration recommends that parents select the rear seat as the safest location for a properly installed child restraint. Please study the section on *Vehicle Safety Belts* in this booklet to ensure the child's safety. If in doubt about installing the child restraint, consult the vehicle owner's manual.
- Secure this child restraint even when it is not occupied. In a crash, an unsecured child restraint may injure vehicle occupants.
- When using in vehicle with air bags, refer to the vehicle owner's manual for child restraint installation instructions and precautions.
- Restraint must be in the full upright position when installed in forward facing mode with children over 33 pounds (15 kg).
- Never use the adjuster strap to lift or carry this child restraint. Doing so could cause damage to the harness adjuster and webbing. Always carry this child restraint by the shell or tether straps.
- The primary protection for occupants of a vehicle in a collision is the body of the vehicle itself; a child restraint will not protect a child when the vehicle is seriously impacted. However, correctly installed, a child restraint will substantially improve the chances for survival in most crashes. Make sure that all users fully understand the correct ways to use this child restraint in a vehicle.

## Safety Information

- This child restraint system conforms to all applicable Federal motor vehicle safety standards. **This restraint is certified for use in motor vehicles and aircraft.**
- **Fill out the registration card and mail it in today!**

Child restraints could be recalled for safety reasons. You must register this restraint to be reached in a recall. Send your name, address, and the restraint's model number and manufacturing date to Britax Child Safety, Inc. 13501 South Ridge Drive Charlotte, NC 28273 or call 1-888-4BRITAX. For recall information, call the U.S. Government's Auto Safety Hotline at 1-800-424-9393 (202-366-0123 in DC area).

You may also register by visiting [BritaxUSA.com](http://BritaxUSA.com).



**WARNING!** DO NOT place a child restraint in the front seat of a vehicle with a passenger air bag unless the air bag is turned off. DEATH or SERIOUS INJURY can occur. The back seat is the safest place for children under 12.

## Safety Information

### IMPORTANT

- Verify that the child restraint is secure and that the harness is properly adjusted around the child each time the child restraint is used.
- Adjust the harness to fit the clothes the child is wearing. The fit for a child in winter clothes will differ from a child in summer clothes.
- Cover the restraint when the vehicle is parked in direct sunlight. Parts of the child restraint could become hot enough to burn the child.
- Store the child restraint in a safe place when it is not being used. Avoid placing heavy objects on top of it.
- Discontinue use of a child restraint that is older than six years or has been in a severe crash to prevent injury due to deterioration or hidden damage.
- Do not leave children alone in a vehicle, even for a short time.
- Do not, except as described in this booklet, attempt to disassemble any part of the child restraint or change the way its harness or the vehicle restraint belts are used.
- Do not leave loose objects, e.g. books, bags, etc., in the back of a vehicle. In the event of a sudden stop, loose objects will keep moving, potentially causing serious injuries.
- Do not leave folding vehicle seats unlatched. In the event of a sudden stop, a loose seat back could prevent the child restraint from protecting the child as well as it should.
- Do not allow children to play with the child restraint.
- Do not use anything to raise the restraint off the vehicle seat. In an crash, it could slide and may not protect the child as well as it should.

### Restraint Features



- 1 Headrest
- 2 Harness
- 3 Comfort Pads
- 4 Chest Clip
- 5 HUGS™  
Shoulder Pads
- 6 Harness Holder
- 7 Belly Pad
- 8 Buckle
- 9 Harness Adjuster  
Lever (under flap)
- 10 Harness Adjuster Strap
- 11 Perma-Book™ (under cover)
- 12 LATCH Connector
- 13 Recline Handle
- 14 LATCH Adjuster
- 15 LATCH Harness

### Restraint Features



- 16 Cover
- 17 Versa-Tether® Pouch
- 18 Harness Height Knob
- 19 Forward Facing Lock-off
- 20 LATCH Connector Pouch (under cover)
- 21 Belt Guard & Yoke
- 22 LATCH Bar
- 23 Booklet Storage
- 24 Rear Facing Lock-off
- 25 Base

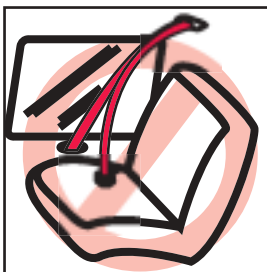
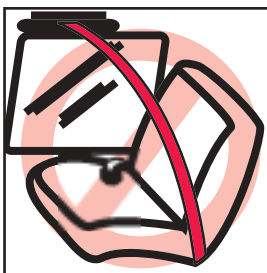
## Vehicle Safety Belts

**NOTE:** The information in this section applies only to installation with vehicle belts.

**IMPORTANT:** Some vehicles have no seating positions which are compatible with this child restraint, or any other child restraint. If in doubt, contact the vehicle manufacturer for assistance.

The following types of vehicle belts are **not** compatible with this child restraint:

- ✗ Front vehicle belts with top or bottom anchorage points in the door.
- ✗ Motor driven automatic vehicle belts.
- ✗ Three-point belts that have separate retractors for the shoulder section and the lap section.
- ✗ Non-locking (ELR) two-point vehicle belts.



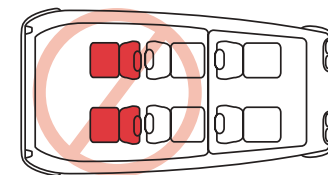
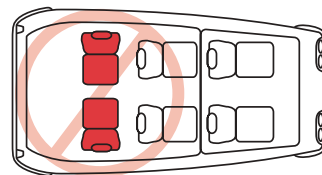
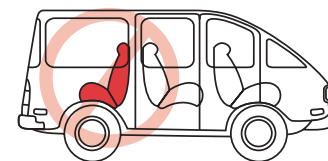
The owner's manual for your vehicle will have information on the types of vehicle belts in your vehicle. If your belt type is listed above, select another seating position or use LATCH connectors.

This child restraint can fit securely in most vehicles using the existing vehicle belts. However, some types of vehicle designs prevent a secure fit of the child restraint due to the position of the vehicle belt lower anchorage points.

## Vehicle Seating Positions

**WARNING:**

- Forward facing vehicle seats **MUST** be used with this child restraint. Side facing or rear facing seats **CANNOT** be used.

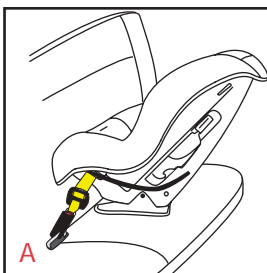


## Installation: Rear Facing

### Rear Facing LATCH Installation

- Figure A illustrates a typical rear facing LATCH installation.

- 1 Verify that your vehicle is equipped with LATCH anchors.
  - If LATCH anchors are not installed, you must use standard vehicle belt installation methods.
- 2 If stored, remove LATCH connectors from storage pouches under cover.
- 3 Press and hold the LATCH adjuster release button, then pull to lengthen LATCH harness to full length.
- 4 Fully recline the restraint and place it sideways on the vehicle seat, with the front facing toward you.
- 5 Verify that the LATCH harness is not twisted, then attach the farthest connector to LATCH anchor (Fig. B).
  - A positive click confirms attachment.
  - If LATCH connectors will not attach with a positive click, it may be necessary to switch the LATCH connectors as shown on page 21.
- 6 Rotate seat into rear facing position.
- 7 Verify that the LATCH harness is not twisted, then attach the closest connector to LATCH anchor (Fig. C).
  - A positive click confirms attachment.



## Installation: Rear Facing

- 8 Push the child restraint firmly into the vehicle seat while pulling each LATCH harness tight (Fig. D).
- 9 Verify that all connections are secure and the restraint is stable.
  - Installation can be improved by the use of the Versa-Tether® (see pages 23–25).



### NOTE:

- The back angle of the child restraint should not exceed 45° when properly installed in the rear facing position.
- If there is a problem stabilizing the child restraint, place a rolled towel in the crease of the vehicle seat to help level the child restraint base.

**WARNING:** Only raise restraint as described above. Do not raise the restraint off of the front edge of vehicle seat; doing so will reduce the protection for your child.

### Removal:

Release each LATCH harness from the LATCH anchor by pressing the release button on the LATCH connector. Disconnect Versa-Tether®, if attached.

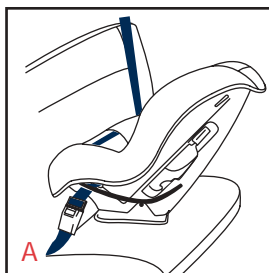
- When not in use, always store the LATCH connectors in pockets.

## Installation: Rear Facing

### Rear Facing Lap-Shoulder Belt Installation

- Figure A illustrates a typical rear facing lap-shoulder belt installation.
- When not in use, always store the LATCH connectors in storage pouches sewn in cover above rear facing lock-offs.

- 1 Place the child restraint rear facing and in full recline position on the vehicle seat.
- 2 Open rear facing lock-off farthest from where the vehicle belt will be buckled.
- 3 Pull the vehicle belt out, then pass it through the first rear facing belt slot (Fig. B).
  - The vehicle belt can be routed over or under the cover.
- 4 Route vehicle belt behind and under the buckle strap, then through the second rear facing belt slot.
- 5 Verify that the vehicle belt is not twisted, then buckle (Fig. C).
- 6 Push the restraint firmly into the seat while removing slack from the lap portion of the vehicle belt, then the shoulder portion (Fig. D).



## Installation: Rear Facing

- 7 Position both sections of vehicle belt through the rear facing lock-off farthest from vehicle buckle, then close lock-off arm (Fig. E).
  - Lock-off is properly closed when a positive click is heard.
  - To prevent breakage, never bend the lock-off arm up or down.
- 8 Verify that the vehicle belt is tight and the child restraint is stable.
  - Installation can be improved by the use of the Versa-Tether® (see pages 23–25).



#### NOTE:

- The back angle of the child restraint should not exceed 45° when properly installed in the rear facing position.
- If there is a problem stabilizing the child restraint, place a rolled towel in the crease of the vehicle seat to help level the child restraint base.

**WARNING:** Only raise restraint as described above. Do not raise the restraint off of the front edge of vehicle seat; doing so will reduce the protection for your child.

#### Removal:

Open lock-offs, then unbuckle and remove vehicle belt from belt path. Disconnect Versa-Tether®, if attached.

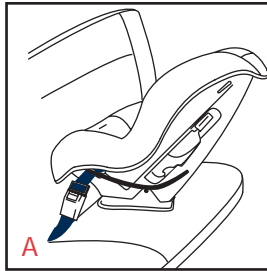


## Installation: Rear Facing

### Rear Facing Lap Belt Installation

- Figure A illustrates a typical rear facing lap belt installation.
- When not in use, always store the LATCH connectors in storage pouches sewn in cover above rear facing lock-offs.

- 1 Place the child restraint rear facing and in full recline position on the vehicle seat.
- 2 Open rear facing lock-off farthest from where the vehicle belt will be buckled.
- 3 Pull the vehicle belt out, then pass it through the closest rear facing belt slot (Fig. B).
  - The vehicle belt can be routed over or under the restraint cover.
- 4 Route vehicle belt behind and under the buckle strap, then through the second rear facing belt slot.
- 5 Verify that the vehicle belt is not twisted, then buckle (Fig. C).
- 6 Push the child restraint firmly into the vehicle seat while removing slack from the vehicle belt.



14

## Installation: Rear Facing

- 7 Position the vehicle belt through the rear facing lock-off farthest from the vehicle buckle, then close lock-off arm (Fig. D).

- Lock-off is properly closed when a positive click is heard.
- To prevent breakage, never bend the lock-off arm up or down.

- 8 Verify that the vehicle belt is tight and the child restraint is stable.

- Installation can be improved by the use of the Versa-Tether® (see pages 23–25).

### NOTE:

- The back angle of the child restraint should not exceed 45° when properly installed in the rear facing position.
- If there is a problem stabilizing the child restraint, place a rolled towel in the crease of the vehicle seat to help level the child restraint base.

**WARNING:** Only raise restraint as described above. Do not raise the restraint off of the front edge of vehicle seat; doing so will reduce the protection for your child.

### Removal:

Open lock-offs, then unbuckle and remove vehicle belt from belt path. Disconnect Versa-Tether®, if attached.



15

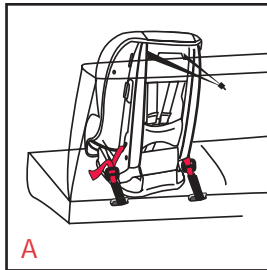
## Installation: Forward Facing

### Forward Facing

#### LATCH Installation

• Figure A illustrates the forward facing LATCH harness routing.

- 1 Verify that your vehicle is equipped with LATCH anchors.
  - If LATCH anchors are not installed, you must use standard vehicle belt installation methods.
- 2 If stored, remove LATCH connectors from storage pouches under cover.
- 3 Press and hold the LATCH adjuster release button, then pull to lengthen LATCH harness to full length.
- 4 Place the restraint sideways on the vehicle seat, with the back facing toward you.
  - Restraint must be in the full upright position when installed in forward facing mode with children over 33 pounds (15kg).
  - If installing with Versa-Tether®, remove tether from pouch and loosely attach to an approved tether anchorage point before continuing. See pages 23–25 for complete Versa-Tether instructions.
- 5 Verify that LATCH harness is not twisted, then loosely attach the farthest connector to LATCH anchor (Fig. B).
  - A positive click confirms attachment.
  - If LATCH connectors will not attach with a positive click, it may be necessary to switch the LATCH connectors as shown on page 21.



A



B



C

## Installation: Forward Facing

- 6 Rotate seat into forward facing position.
- 7 Verify that LATCH harness is not twisted, then loosely attach the closest connector to LATCH anchor (Fig. C).
  - A positive click confirms attachment.
- 8 Push the child restraint firmly into the vehicle seat while pulling each LATCH harness tight (Fig. D).
- 9 Verify that all connections are secure and the restraint is stable.
  - Installation can be improved by the use of the Versa-Tether® (see pages 23–25).



D

**WARNING:** Use vehicle belt (not LATCH connectors) for installations with children weighing more than 48 pounds (21 kg). Refer to the vehicle owner's manual or contact the vehicle manufacturer for the maximum weight rating for their LATCH anchors. Unless specified otherwise by the vehicle manufacturer, assume a 48-pound child is the vehicle LATCH anchor limit.

#### Removal:

Release each LATCH harness from the LATCH anchor by pressing the release button on the LATCH connector. Disconnect Versa-Tether®, if attached.

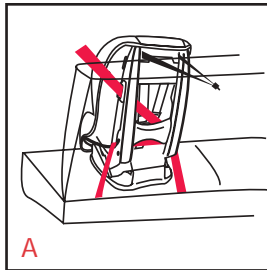
- When not in use, always store the LATCH connectors in pockets.

## Installation: Forward Facing

### Forward Facing Lap-Shoulder Belt Installation

- Figure A illustrates the forward facing lap-shoulder vehicle belt route.
- When not in use, always store the LATCH connectors in storage pouches sewn in cover above rear facing lock-offs.

- 1 Place the child restraint forward facing on the vehicle seat.
  - Restraint must be in the full upright position when installed in forward facing mode with children over 33 pounds (15kg).
  - If installing with Versa-Tether®, remove tether from pouch and loosely attach to an approved tether anchorage point before continuing. See pages 23–25 for complete Versa-Tether instructions.
- 2 Pull the vehicle belt out, then pass it over the LATCH bar, through the forward facing belt slots, then over the LATCH bar on the other side (Fig. B).
- 3 Verify that the vehicle belt is not twisted, then buckle (Fig. C).



## Installation: Forward Facing

- 4 Rotate the forward facing lock-off down to open.
  - Only use lock-off farthest from where the vehicle belt is buckled.
- 5 Remove slack from the lap portion of the vehicle belt.
- 6 Push the child restraint firmly into the vehicle seat while pulling the shoulder portion of the vehicle belt tightly through the lock-off to remove slack (Fig. D).
- 7 Hold the shoulder belt tight, then rotate the lock-off upward until it clicks in place (Fig. E).
  - Lock-off is not engaged and vehicle belt is not secured until a click is heard.
- 8 Verify that the vehicle belt is tight and the child restraint is secure.
  - See Checking Buckle Position on page 26.
  - Installation can be improved by the use of the Versa-Tether® (see pages 23–25).



### Removal:

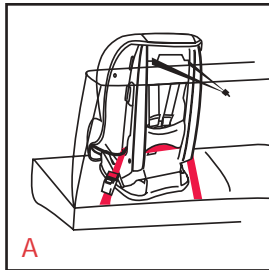
Open lock-offs, then unbuckle and remove vehicle belt from belt path. Disconnect Versa-Tether®, if attached.

## Installation: Forward Facing

### Forward Facing Lap Belt Installation

- Figure A illustrates the forward facing lap belt only vehicle belt route.
- When not in use, always store the LATCH connectors in storage pouches sewn in cover above rear facing lock-offs.

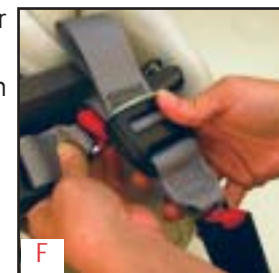
- 1 Place the child restraint forward facing on the vehicle seat.
  - Restraint must be in the full upright position when installed in forward facing mode with children over 33 pounds (15kg).
  - If installing with Versa-Tether®, remove tether from pouch and loosely attach to an approved tether anchorage point before continuing. See pages 23–25 for complete Versa-Tether instructions.
- 2 Pull the vehicle belt out, then pass it **under** the LATCH bar, through the forward facing belt slots, then **under** the LATCH bar on the other side (Fig. B).
- 3 Verify that the vehicle belt is not twisted, then buckle.
- 4 Push the child restraint firmly into the vehicle seat while removing slack from the vehicle belt (Fig. C).
- 5 Verify that the vehicle belt is tight and the child restraint is secure.
  - See *Checking Buckle Position* on page 26.



## Switching the LATCH Connectors

If the LATCH connector will not properly connect to the LATCH bar in the vehicle, the connectors must be switched from one side to the other. This will ensure that the connectors are correctly aligned.

- 1 Lift the front of the cover to access the LATCH bar.
- 2 Slide one connector through both rear facing belt slots to the opposite side of the restraint, so that both connectors are on the same side of the restraint (Fig. D).
- 3 Loosen the loop on one connector (Fig. E).
- 4 Thread the other connector through the loop created in step 3 to switch positions (Fig. F).
- 5 Slide the connector which is now closest to the front of the restraint through both rear facing belt slots to the opposite side of the restraint, so that each connector is in proper position on the LATCH bar.
- 6 Replace cover and continue with installation procedure.



## Installation in Aircraft

This child restraint is certified for aircraft use. Most airlines in the U.S. and Canada will allow the use of a child restraint, if it is labeled as an approved child restraint for airline use and fits properly on the plane. Contact the airline about their policy prior to traveling.

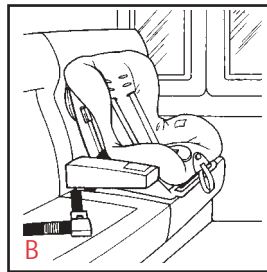
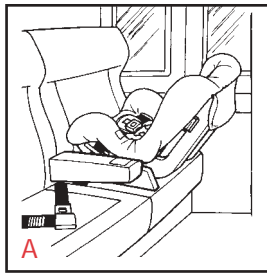
- Place the child restraint next to a window to avoid blocking the aisle.
- If the aircraft lap belt is too short, ask the flight attendant for a Belt Extender.

### Rear Facing Installation

For rear facing aircraft installation (*Fig. A*), follow instructions on pages 14–15.

### Forward Facing Installation

For forward facing aircraft installation (*Fig. B*), follow instructions on page 20.



## Versa-Tether®

**WARNING:** WHEN USING THE RESTRAINT IN FORWARD FACING MODE, ATTACH THE VERSA-TETHER ONLY TO TETHER ANCHORS IDENTIFIED BY THE VEHICLE MANUFACTURER AS TETHER ANCHORAGE POINTS. USE OF OTHER LOCATIONS IS NOT APPROVED OR PERMITTED.

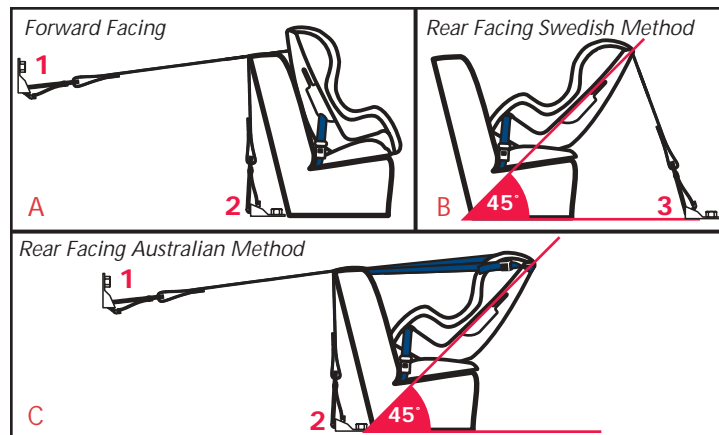
- Britax® recommends that the tether be used at all times. Using the tether will improve the stability of the child restraint and reduce the risk of injury.
- If the vehicle does not currently have a tether anchor attachment, refer to the vehicle owner's manual or contact the vehicle manufacturer for assistance.
- If a tether anchorage is not available, DO NOT modify the vehicle without advice from the vehicle manufacturer.
- DO NOT hook the Versa-Tether to the bottom of a vehicle seat adjuster!
- The back angle of the child restraint should not exceed 45° when properly installed in the rear facing position.
- The rear facing recline angle can be adjusted by tightening the tether as described on page 24, using anchor point 3.
- It may be necessary to loosen the tether and vehicle seat belt before adjusting the recline position.

## Versa-Tether®

### Using the Versa-Tether

#### Before installing restraint:

- 1 Remove tether components from pouch on rear of restraint.
- 2 Press and hold the tether adjuster release button, then pull to fully extend tether strap into a V-shape.
- 3 Loosely attach the tether to an approved anchor point using the tether hook located on the tether strap.
  - See figure A for forward facing installation.
  - See figure B or C for rear facing installation. Rear facing installation may also require use of the Tether Connector Strap, as described on page 25.



- 4 Install restraint as described in the appropriate installation section on pages 10–20.
  - Continue to step 5.

## Versa-Tether®

#### After installing restraint:

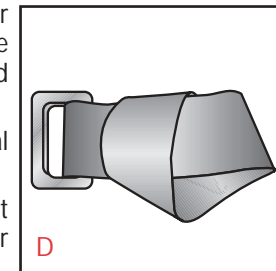
- 5 Pull the adjuster strap to remove all slack.
- 6 Verify that there is tension in the tether strap and that child restraint is properly secured.

### Rear Facing Tether Connector Strap

**IMPORTANT:** Only use the tether connector strap (Fig. D) for rear facing tether installation.

Because every vehicle model is different, sometimes you cannot find a location to properly anchor the tether, or the structural part of the seat is too large for the hook. Use the tether connector strap to assist in creating an anchor point.

- 1 Find a fixed vehicle seat belt anchor or vehicle seat leg that is bolted to the floor that the strap can be wrapped around.
- 2 Loop the strap around the metal anchor (Fig. D).
- 3 Take the metal D-ring and thread it through the webbing loop on the other end of the strap.
- 4 Pull the metal D-ring all the way through until the strap is tight around the metal anchor.
- 5 Use the D-ring as an attachment point for the hook on the tether strap. Refer to pages 23–24 for instructions on using the tether.



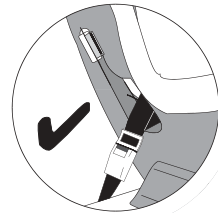
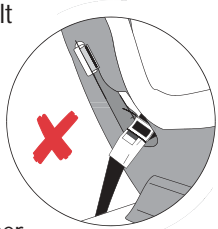
## Checking Buckle Position

**WARNING:** The position of the vehicle belt buckle can affect the stability of the child restraint. In an crash, an improperly positioned buckle could become loose and the child would be unprotected.

If the buckle lies near the position marked as wrong (✘) when the vehicle belt is tightened, try fitting the child restraint in another seating position in the vehicle.

If it is not possible to achieve the correct position (✔) for the buckle, then another seating position **MUST** be used.

**IMPORTANT:** Check that the child restraint is secure before each trip.



## Recline Adjustment

**IMPORTANT:** This child restraint can be used in the upright or full recline position with children up to 33 pounds (15 kg), and upright position only with children above 33 pounds.

Pull the recline handle, then slide the restraint shell into the desired position. Release the recline handle, then verify that the child restraint has locked into position.



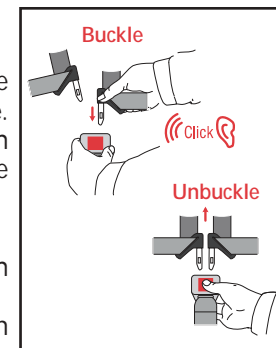
## Using the Buckle

### Fastening the Buckle

- Hold the buckle with one hand.
- Use the other hand to insert one tongue at a time into the buckle. Proper connection is confirmed with a positive click after inserting the second buckle tongue.

### Releasing the Buckle

- Brace the rear of the buckle with hand.
- Use thumb to press release button until tongues are ejected from buckle.



**IMPORTANT:** Periodically clean the buckle to ensure proper operation. See section, *Cleaning the Buckle*, on page 35.

## Using the Chest Clip

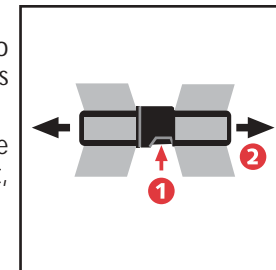
### Fastening the Chest Clip

Fasten the chest clip by pushing the two halves together until a positive click is heard.

**IMPORTANT:** The correct height for the chest clip is at the middle of the chest, level with the armpit.

### Releasing the Chest Clip

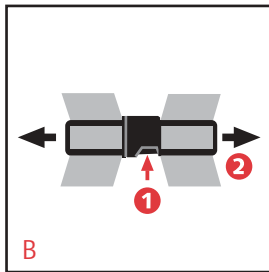
Release the chest clip by squeezing the middle tab, then pull the two pieces apart.



## Securing Your Child

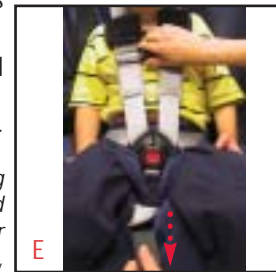
Once the child restraint has been installed in the vehicle, follow these instructions to secure the child.

- 1 Loosen the harness by lifting the adjuster lever located in front of the restraint, then pull the harness straps forward (Fig. A).
- 2 Unfasten the chest clip by squeezing the middle tab (Fig. B).
- 3 Unfasten the buckle by pressing down on the release button.
- 4 Move the harness straps to the side of the restraint.
  - Use the harness holder located on the straps and side of the cover to aid in holding the straps.
- 5 Place child in the restraint.
- 6 Position the harness straps around the child and fasten the child restraint buckle (Fig. C) and chest clip (Fig. D).
  - Proper connection of the buckle is confirmed with a positive click after inserting the second buckle tongue.
- 7 Gently pull up on the harness straps to tighten the lap section of the harness, which should fit low on the child's body.



## Securing Your Child

- 8 Slowly pull the adjuster strap to tighten the harness around the child (Fig. E).
  - Snugly adjust the belts provided with this child restraint around your child. A snug strap should not allow any slack. It lies in a relatively straight line without sagging. It does not press on the child's flesh or push the child's body into an unnatural position.
- 9 Position the chest clip at the middle of the child's chest, level with the child's armpit (Fig. F).
- 10 Make sure that harness is not twisted and child is properly secured.
  - Make sure that harness height is correct. Refer to page 14 for instructions.
  - Always pull on the harness after securing the child to make sure the buckle and harness are locked. If not, the buckle or adjuster area may be clogged with food, drink, or objects that need to be removed. See pages 33 and 35 for cleaning instructions.
  - Make sure that the harness is tight before each use, or after any adjustments.
  - Do not remove HUGS™ pads for forward facing use. Removal of HUGS is optional for rear facing use only.

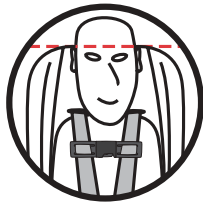
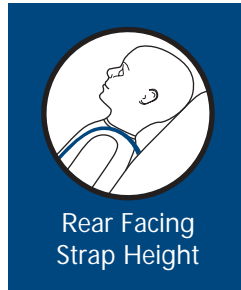




## Harness Height

### Checking Harness Height

- 1 Place child in restraint, then secure harness (see pages 28–29).
- 2 Observe where the harness straps are positioned on the child.
  - **Rear Facing Strap Height:** Harness straps should be located at or slightly below the child's shoulders.
  - **Forward Facing Strap Height:** Harness straps must be located even with the child's shoulder.
- 3 If harness height is correct, continue using child restraint without adjustment. If harness height requires adjustment, refer to *Harness Height Adjustment* on page 31.



#### Weight Range

Rear Facing 5–33 pounds (2.3–15 kg)  
 Forward Facing up to 65 pounds (29.5 kg)

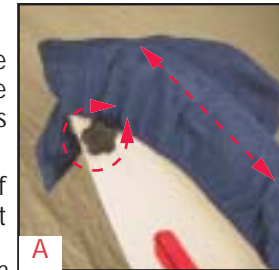
#### Maximum Height

The child is too tall when the tops of the ears are above the top of the headrest or height exceeds 49 inches (124 cm).

## Harness Height

### Harness Height Adjustment:

- 1 Loosen the harness, by lifting the harness adjuster lever while pulling the harness straps forward as far as possible.
- 2 Rotate harness height knob on side of restraint to raise or lower the headrest and harness (Fig. A).
  - See *Checking Harness Height* on page 30 to determine correct harness height for your child.



## Care and Maintenance

### Cover Removal

- 1 Loosen the harness by lifting the harness adjuster lever while pulling the harness straps forward as far as possible.
- 2 Unhook the harness straps from the yoke on the rear of child restraint.
- 3 Remove the belly pad from the buckle.
- 4 Pull upper harness straps through the shell and cover, to the front of the restraint.
- 5 Remove the comfort pads.
- 6 Gently remove the headrest cover. Be careful not to damage the energy absorbing foam.
- 7 Pull the lower harness straps, buckle tongues, chest clip, and buckle through the slots in the cover.
- 8 Remove the seat cover by sliding it over the headrest, through the large opening in the cover.

#### **WARNING:**

- Do not take apart or attempt to take apart the harness. It is unnecessary and dangerous to do so.
- Never remove the buckle tongues from the harness. They cannot be reattached after removal.

### Refitting the Cover

To refit the cover, reverse *Cover Removal* directions. Verify that the harness straps are threaded through the chest clips and that the harness is not twisted.

## Care and Maintenance

### Cleaning the Cover

- **HAND WASH**, using cold water and mild soap.
- **LINE DRY**, to prevent cover from shrinking.
- **DO NOT:** Bleach, machine wash, machine dry, or iron.

#### Care Symbols



### Cleaning the Shell

- **SPONGE CLEAN**, using warm water and mild soap.
- **TOWEL DRY**
- **DO NOT:** Use solvents, abrasive cleaners, or disassemble the harness.

### Cleaning the Harness

- **SPONGE CLEAN**, using warm water and mild soap.
- **TOWEL DRY**
- **DO NOT:** Bleach, machine wash, machine dry, or disassemble the harness.

### Cleaning the Harness Adjuster

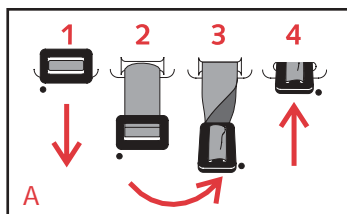
Periodically check the adjuster area to be sure it is clean and free of food, coins, dirt, and other objects. If debris is present, it must be removed to prevent interference with the adjuster mechanism.

- **BRUSH AWAY LOOSE DEBRIS**, using a soft bristled brush.
- **SPONGE CLEAN**, using warm water and mild soap.
- **TOWEL DRY**
- **DO NOT:** Use solvents, abrasive cleaners, or disassemble the harness.

## Care and Maintenance

### Buckle Removal

- 1 Fully recline the child restraint.
- 2 Locate the metal buckle strap retainer on bottom of the restraint.
- 3 Pull retainer away from child restraint to loosen.
- 4 Turn the retainer so that the short side will go through the slot in the restraint shell (*Fig. A*).
- 5 Push the retainer through slots in the shell and cover, to the front of the restraint.



### Rethreading the Buckle

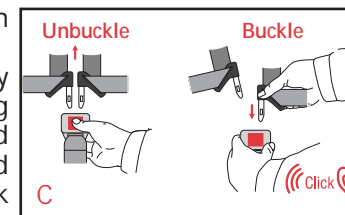
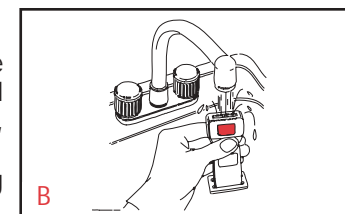
- 1 Locate the buckle slot.
- 2 Turn the buckle retainer so that the short side will go through the slot in the cover and restraint shell (*Fig. A*).
- 3 Pull buckle away from restraint until tight, then verify that the strap is not twisted and the release button is facing outward.

## Care and Maintenance

### Cleaning the Buckle

The buckle will need to be periodically checked and cleaned of any accumulated debris, dirt, or dried liquids.

- **THOROUGHLY RINSE**, using warm water (*Fig. B*).
- **SOAK**, overnight if possible, using warm water to loosen hardened drinks or food.
- **TEST THE BUCKLE**, by fastening and unfastening until a positive click is heard after inserting the second buckle tongue (*Fig. C*). If click is not heard, repeat cleaning procedure.
- **TOWEL DRY**
- **DO NOT:** Lubricate, use solvents, abrasive cleaners, soap or household detergents.



## Warranty

This child restraint was manufactured by Britax®. Britax Child Safety, Inc. ("Britax") warrants this product to the original retail purchaser as follows:

### LIMITED ONE-YEAR WARRANTY

This product is warranted against defective materials or workmanship for one year from the date of original purchase. Proof of purchase is required. The exclusive remedy for this warranty is that Britax will, at its option, provide repair or replacement components for this product or refund the original purchase price of the product. Britax reserves the right to discontinue or change fabrics, parts, models or products, or to make substitutions.

To make a claim under this warranty, contact Britax Consumer Services at 1-888-427-4829 or write to us using the address on the back cover of this booklet. Proof of purchase is required.

PLEASE COMPLETE AND MAIL THE OWNER REGISTRATION CARD WITHIN (30) DAYS OF PURCHASE.

### WARRANTY LIMITATIONS

This warranty does not include damages which arise from negligence, misuse or use not in accordance with the product instruction.

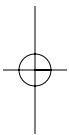
The use of non-Britax Child Safety, Inc. covers, inserts, toys, accessories, or tightening devices is not approved by Britax. Their use could cause this restraint to fail Federal Safety Standards or perform worse in a crash. Their use automatically voids the Britax warranty.

### LIMITATION OF DAMAGES

The warranty and remedies as set forth above are exclusive and in lieu of all others, oral or written, express or implied. In no event will Britax, or the retailer selling this product, be liable for any damages, including incidental or consequential damages, arising out of the use or inability to use this product.

### LIMITATIONS OF WARRANTIES AND OTHER WARRANTY TERMS AND STATE LAWS

Any implied warranties, including implied warranties of merchantability and fitness for a particular purpose, shall be limited to the duration and terms of the express written warranty. Some states do not allow limitations on how long an implied warranty lasts or the exclusion or limitation of incidental or consequential damages, so the above limitations may not apply. This warranty gives you specific legal rights, and you may have other rights, which vary from state to state. Neither Britax, nor the retailer selling this product, authorizes any person to create for it any other warranty, obligation, or liability in connection with this product.



**Britax**  
Childcare

*First class travel for children*

**Britax Child Safety, Inc.**  
13501 South Ridge Drive  
Charlotte, NC 28273  
USA

A Britax Childcare company

Tel: 704-409-1700

**BritaxUSA.com**

